



Teambreaks

DIFFERENCES ARE STRENGTHS

'Spy School'

Will you graduate as a 'Super Spy?'

It's Freshers week at the University of Secret Agents, and everyone has been enrolled on a crash course in several different disciplines. The Group will divide into classes and will rotate through their 5/6 subjects. At each of the locations, the classes will take part in an activity with awards based on performance. On completion of activities everyone will regroup and the awards will be exchanged for clues leading to the identity of a secret location of the Victor Ladorum.

Cat Burglar

Here teams will learn the combined arts of stealth and cunning. The class that graduates with honours will be the group that can send the highest number of people through the booby-trapped infra red maze within strict time limits.



London Car Chase

For this challenge, we will faithfully reproduce the streets of London onto a computer simulation. Each team member will need to prove their driving skills at great speed. Split second decisions will govern their survival and reward.



Interrogation Survival

Relive the most tense moments of your favourite spy movies. Teams will be subjected to 'Unspeakable' acts of torture. Trials will include identification of objects submerged in a bowl of fluid to horrific to describe. Many other horrors await.....





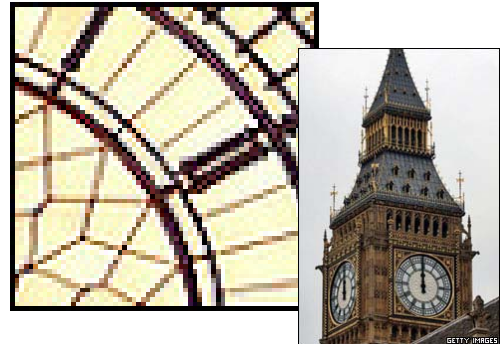
Teambreaks

DIFFERENCES ARE STRENGTHS

'Spy School' continued:

Time Tracker

Quick thinking is at the very core of being a successful spy and this challenge will test the newcomer's ability to think under pressure. They will be given a limited amount of information which has to be properly shared between individuals to successfully communicate and solve the problem.



Super Sniper

On the top of the building across the street sits the enemy agent poised to carry out a dastardly deed. Every muscle in your body tenses as you focus the cross hair of your sniper rifle onto the target area. Remember, don't pull the trigger, just gently squeeze.....

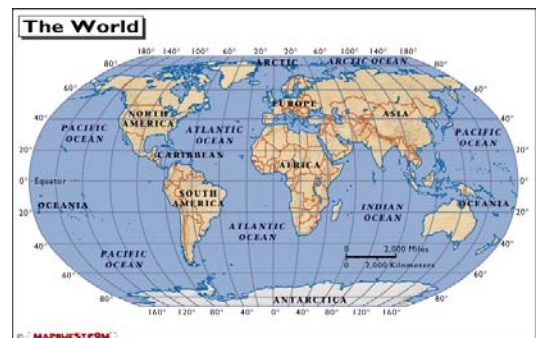


Identity Parade

The heat is on and the classes have to both correctly identify their opposing teams in an identity parade and avoid being identified themselves! Can they be called the masters of disguise or bit parts in an old B movie!

Countdown to Success

With all the classes completed everyone assembles in the main hall where class awards are exchanged for clues. The Holy Grail is located somewhere on the giant world map. The race is on to be the team that can identify the location by pressing the button relating to the map location. A false attempt brings about destruction and a successful attempt means a celebration for the newly graduated 'Super Spies'





Teambreaks

DIFFERENCES ARE STRENGTHS

' Spy School' continued:

Itinerary

The Spy School event is totally flexible and can be from a half day to a full day session. The full day session has more clues to solve than the half day, and involves more activities.

A full day normally runs from 10.00—17.00

A half day is usually either 10.00—13.00 or 14.00—17.00

We can develop the cost of this event to suit your budget as the activities have varying costs.

We have been in the Corporate activity business for 13 years and carry full public liability insurance. Our staff are motivated only by the desire to have a great day and ensure that you have an enjoyable and safe day out.